

# GIS/MAPPING

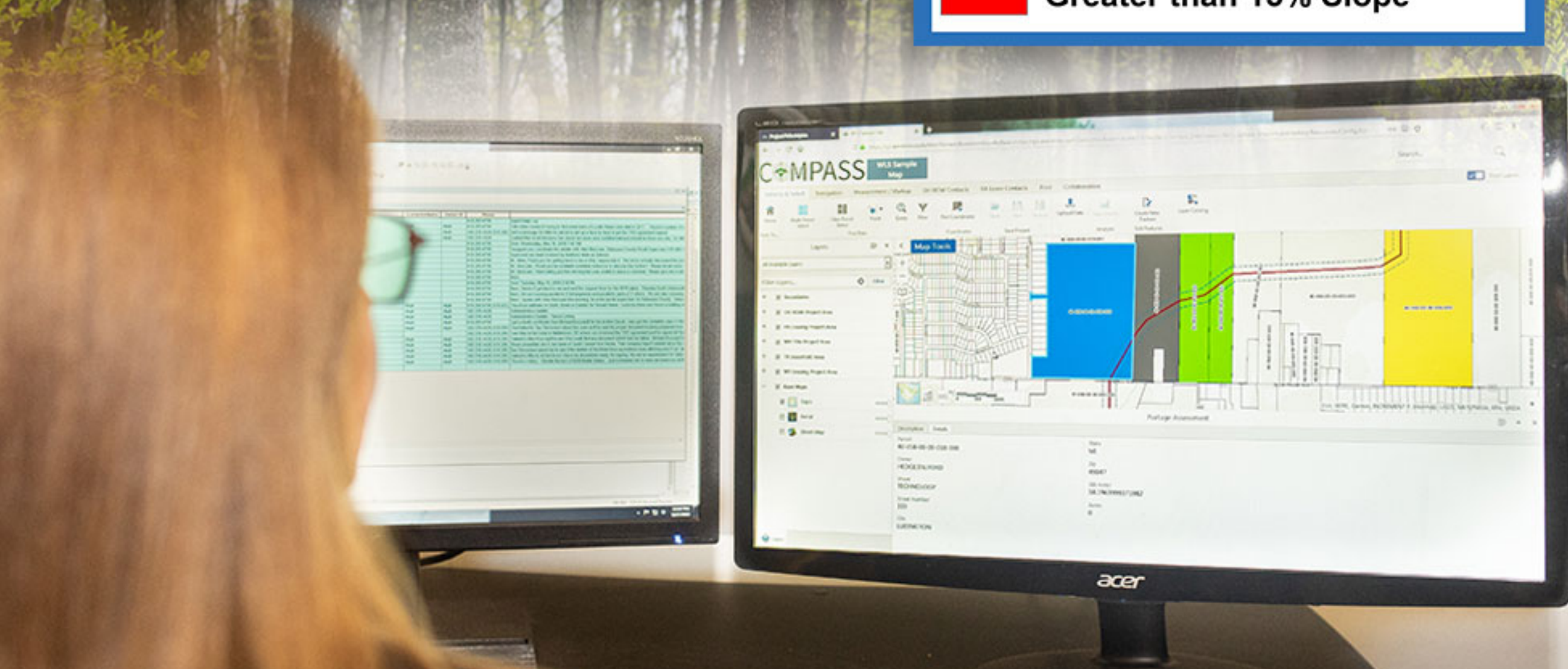
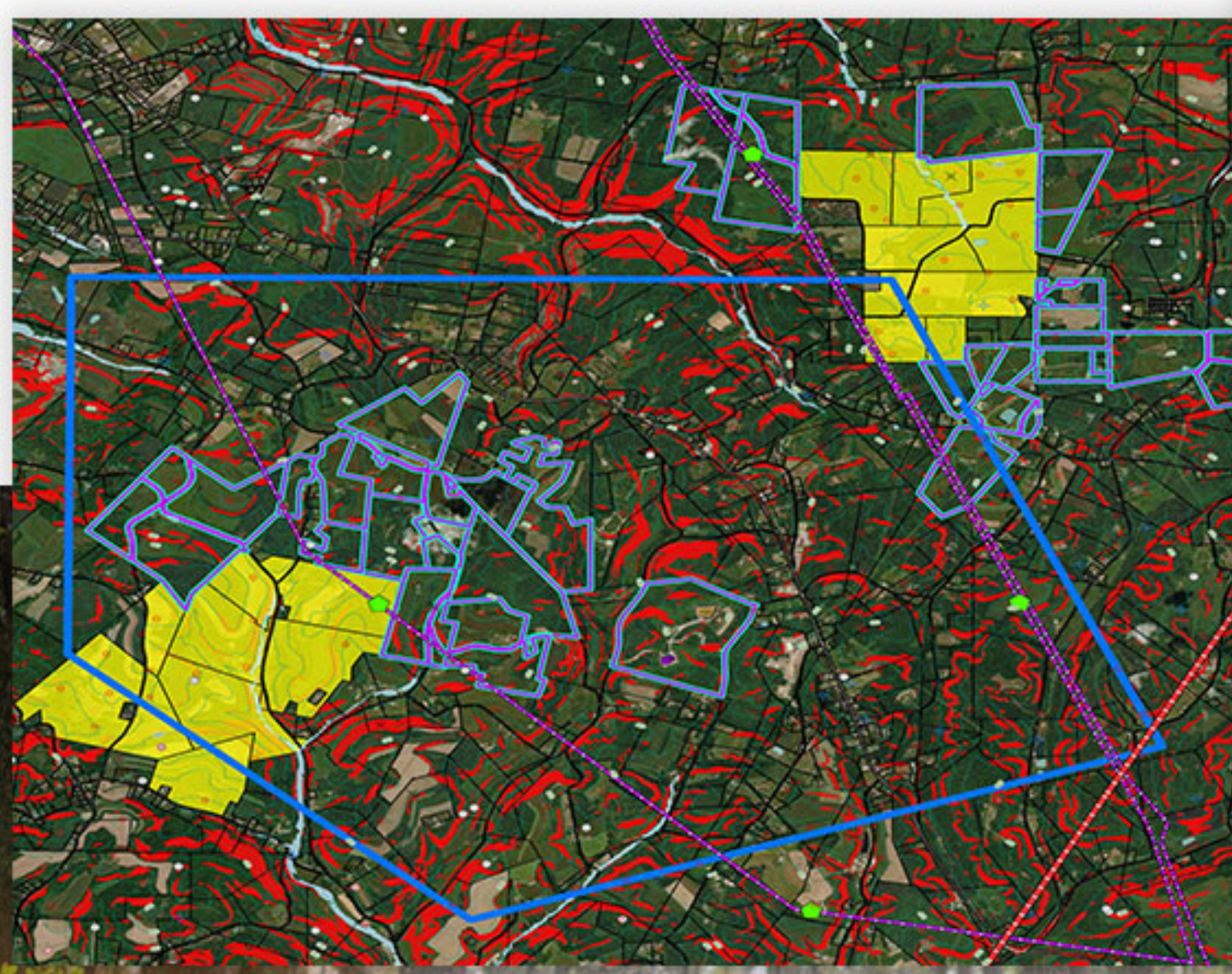
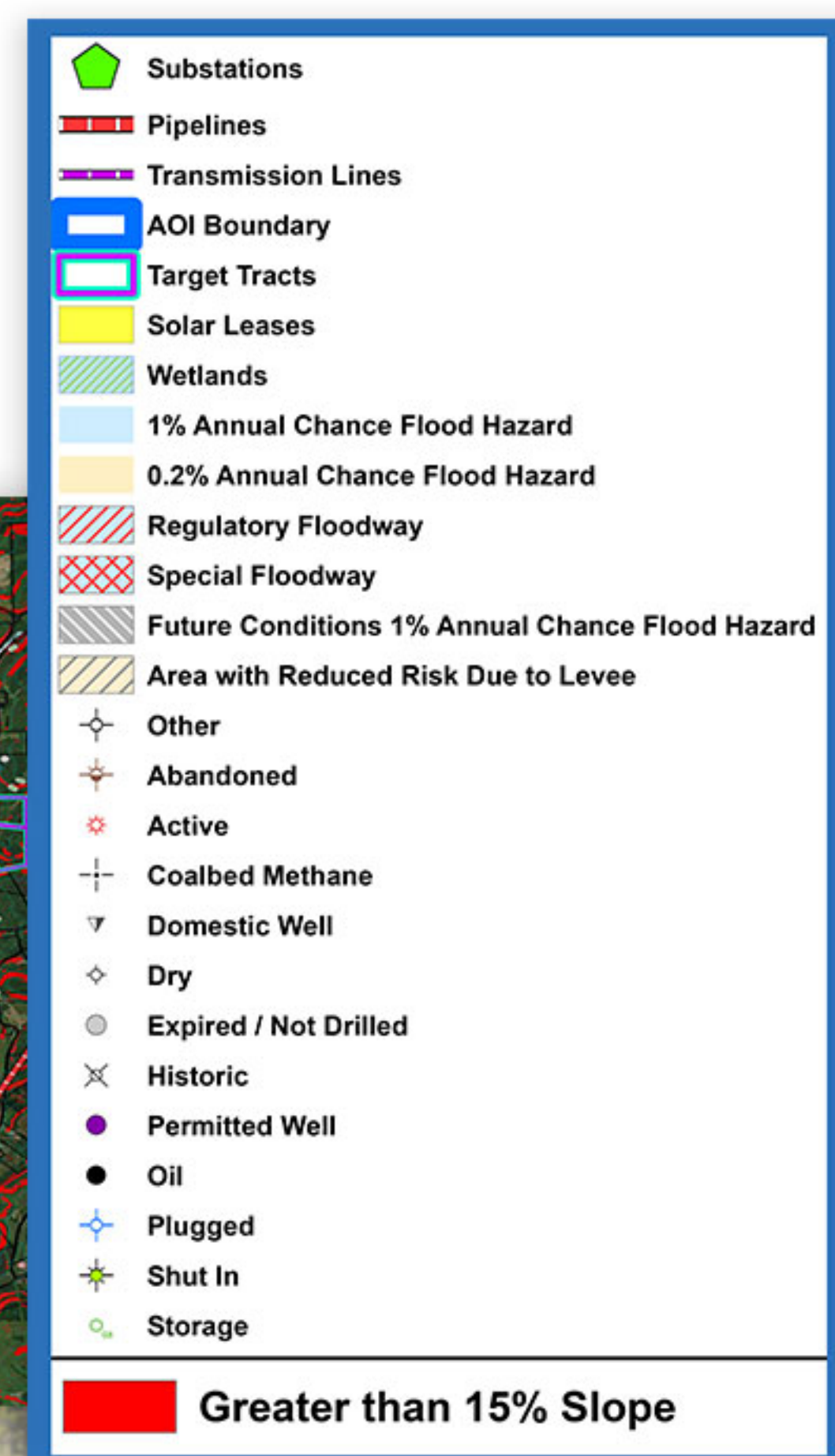
Utilizing ArcGIS technology and examining digital resources, our GIS team will use project criteria to identify site locations unique to your development needs. Once target properties are approved, use our online project management platform, Compass, to access these resources, track acquisition efforts, and administer each project for ultimate success.

## TYPES OF SUPPORT:

- SITE SELECTION ANALYSIS
- KMZ/SHAPEFILE CONVERSIONS
- LANDOWNER EXHIBIT MAPS
- PROJECT OVERVIEW MAPS
- WEBGIS PLATFORM CONNECTIVITY

## CONSULTING RESOURCES SUCH AS:

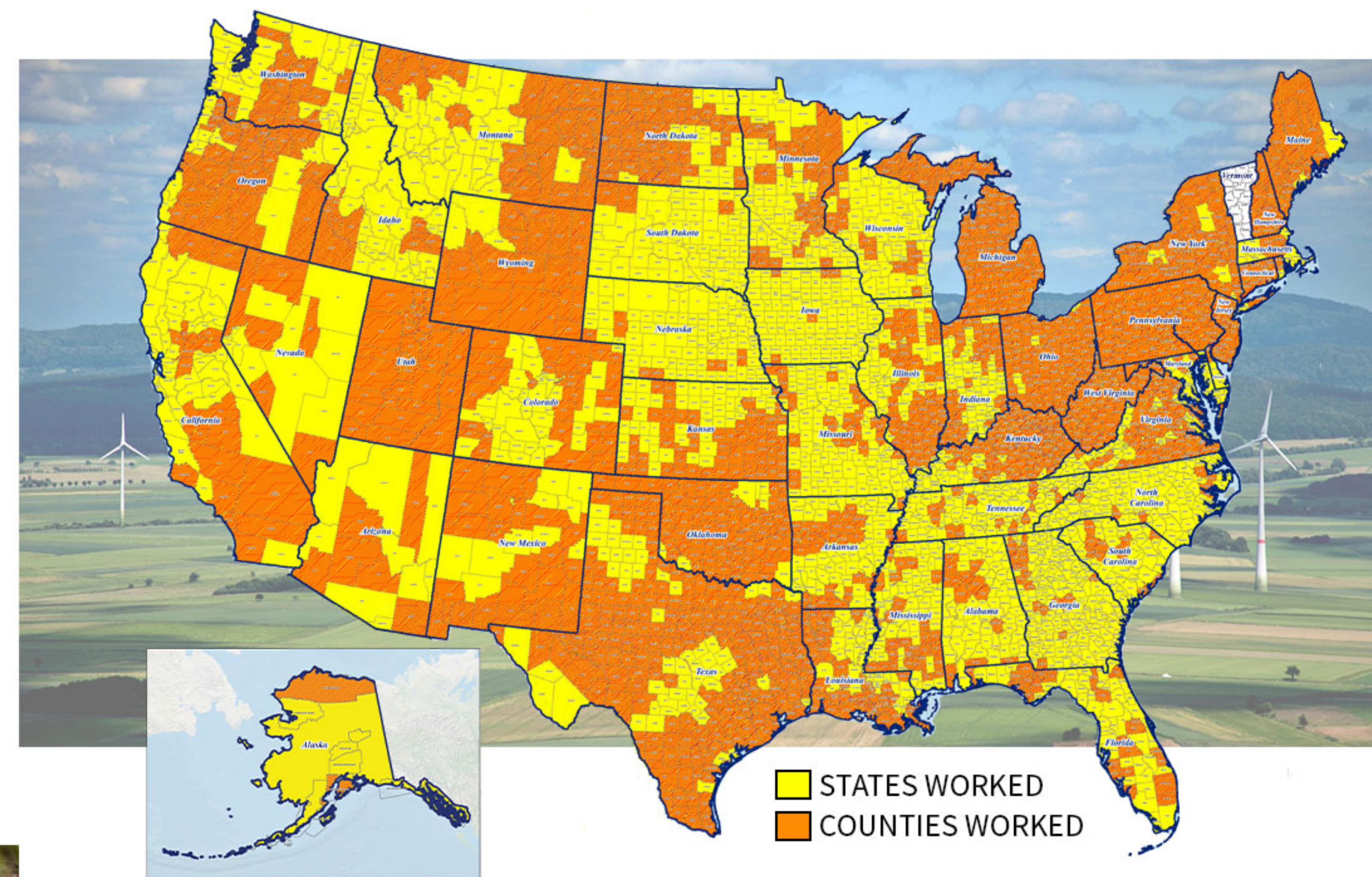
- ZONING / AGRICULTURAL / WETLANDS
- SURFACE OWNERSHIP
- TRANSMISSION LINES
- SUBSTATIONS
- SLOPE
- OIL & GAS WELL DATA



# TITLE RESEARCH

WLS has a depth of title and abstracting services that can take your wind or solar project to the next level, trademarked by fast turnaround times and accurate results. Our department performs surface title, abstracts, right-of-way title, AND due diligence, all designed to fit client specifications and needs.

Our nationwide networked of in-house and field examiners, many of whom are cross-trained in abstracting and due diligence, are multifaceted and prepared to handle projects of all sizes, from community to utility scale projects.



WESTERN LAND SERVICES  
*RENEWABLES DIVISION*

WE ARE YOUR  
**ONE STOP SHOP**

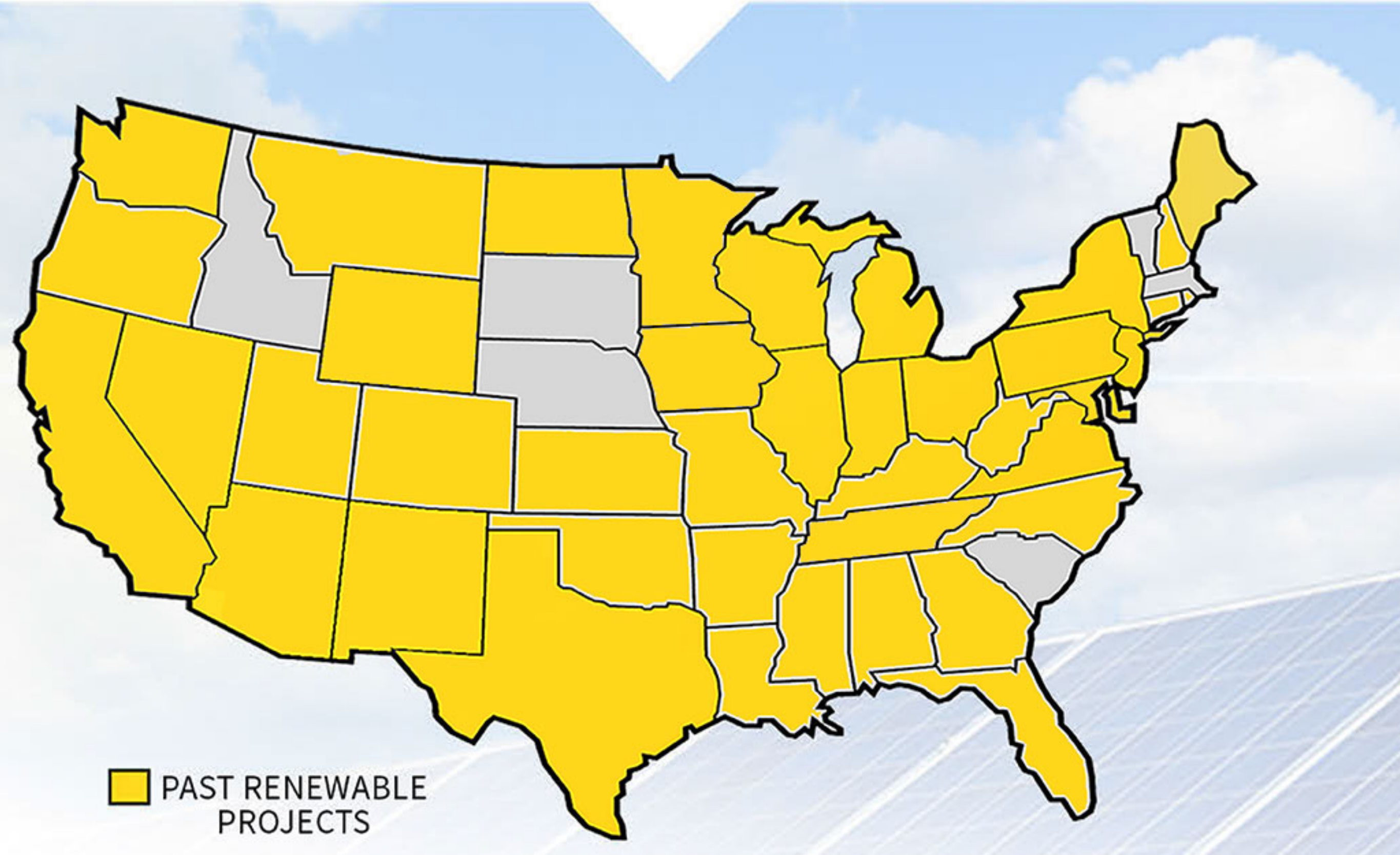




# RENEWABLE ENERGY SERVICE PORTFOLIO

*Western Land Services has been bringing land, energy, & people together for over 45 years, offering a suite of services dedicated to the renewable industry:*

- PROJECT MANAGEMENT
- ACQUISITION & SITE CONTROL
- GIS/MAPPING
- TITLE RESEARCH
- CURATIVE SURVEY



### WHY CHOOSE WESTERN LAND SERVICES?

- ONE STOP SHOP CAPABILITIES
- EMPLOYEE-OWNED MOTIVATION
- NATIONWIDE FOOTPRINT
- ADAPTABLE TO LARGE OR SMALL PROJECTS
- ESTABLISHED EXPERIENCE
- ROBUST PROJECT MANAGEMENT PLATFORM

# ACQUISITION

WLS engages target landowners quickly and efficiently. Whether your project demands a direct mail campaign, a more surgical boots on the ground approach, or a combination of both, WLS will deliver. Our team offers nationwide support.



Every good offense needs a strong defense. Our in-house land team provides expert support to our Land Agents in the field. The in-house team excels at landowner data research, document preparation, fielding calls for remote landowners, and appointment scheduling to name a few. This approach maximizes efficiency and results by keeping field Agents in front of your targeted landowners.



## OUR RENEWABLES LEADERSHIP TEAM



**SHAWN FIELDS**  
PRESIDENT



**CHRIS TOOMAN**  
VP, DIRECTOR OF RENEWABLES



**HEATHER KINNUNEN**  
VP, SHARED SERVICES



**MELISSA BROCKETT**  
DIRECTOR OF TITLE

## OUR OFFICE LOCATIONS

OKLAHOMA CITY • LUDINGTON  
CANONSBURG • MIDLAND • MINOT

## QUESTIONS? INTERESTED IN WORKING WITH US?

# (800)968-4840

